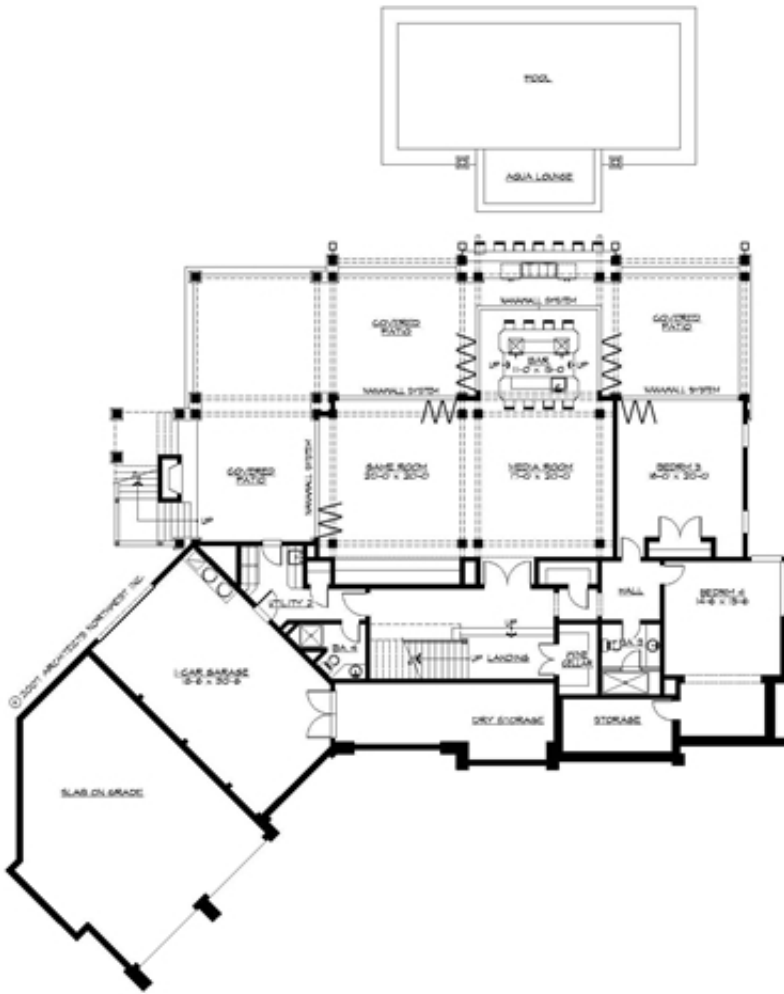


UPPER FLOOR

<p><b>ARCHITECTS NORTHWEST</b>          18915 142nd Avenue NE Suite 100          Woodinville, WA 98072          OFFICE: (425) 485-4900          FAX: (425) 481-6585          www.ArchitectsNW.com</p>	<p><b>PLAN</b>  <b>R4970A3FA-ODB</b></p>	<p>MAIN FLOOR: 2500 S.F.          LOWER FLOOR: 2470 S.F.  <b>TOTAL: 4970 S.F.</b>          LOFT STORAGE: 285 S.F.          GARAGE: 1955 S.F.</p>
---	--	--

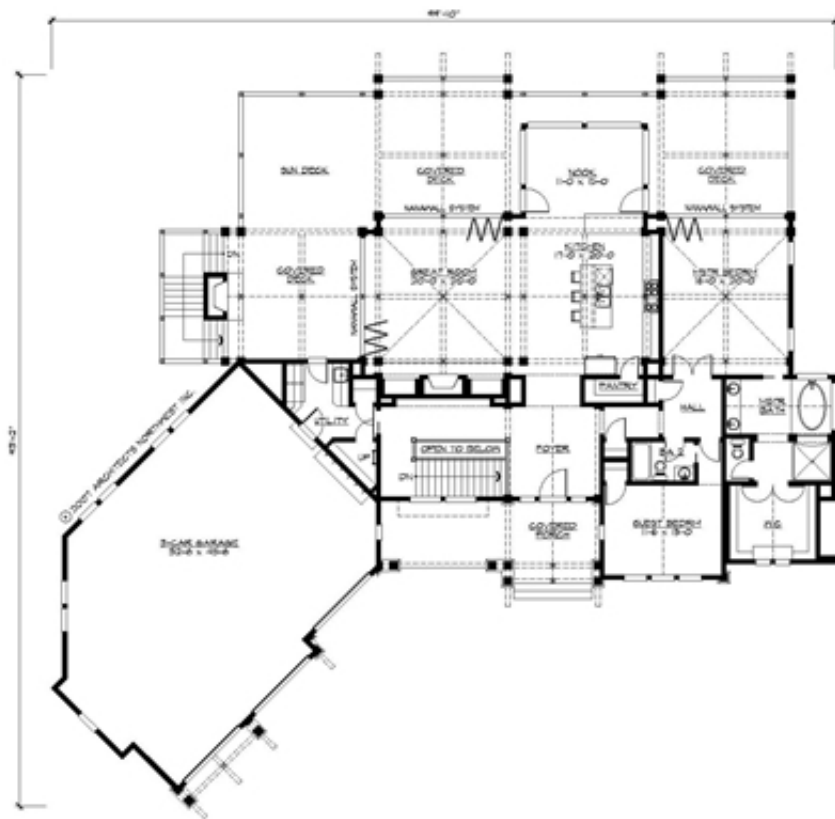


LOWER FLOOR

**ARCHITECTS NORTHWEST**  
 18915 142nd Avenue NE Suite 100  
 Woodinville, WA 98072  
 OFFICE: (425) 485-4900  
 FAX: (425) 487-6585  
 www.ArchitectsNW.com

**PLAN**  
**R4970A3FA-ODB**

MAIN FLOOR: 2500 S.F.  
 LOWER FLOOR: 2470 S.F.  
**TOTAL: 4970 S.F.**  
 LOFT STORAGE: 285 S.F.  
 GARAGE: 1955 S.F.



MAIN FLOOR

<p><b>ARCHITECTS NORTHWEST</b>          18915 142nd Avenue NE Suite 100          Woodinville, WA 98072          OFFICE: (425) 485-4900          FAX: (425) 481-6585          www.ArchitectsNW.com</p>	<p><b>PLAN</b>  <b>R4970A3FA-ODB</b></p>	<p>MAIN FLOOR: 2500 S.F.          LOWER FLOOR: 2470 S.F.  <b>TOTAL: 4970 S.F.</b>          LOFT STORAGE: 285 S.F.          GARAGE: 1955 S.F.</p>
---	--	--